

Lily Walk, Lower Stondon, Henlow, SG16 6NJ

Guide Price £675,000

5 4 3

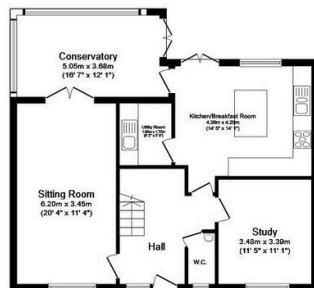


*VIDEO ATTACHED REFERENCE CODE LL0468

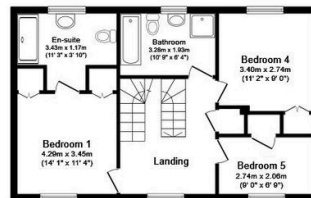
This house has everything you're searching for in a home, with all the space a family needs inside, alongside a delightful garden, a double garage and a driveway outside. The property is opposite a park, on an established development, in a quiet village.

Key Features

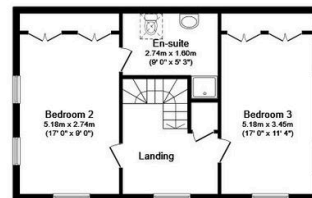
- Easy reach of schools, amenities and stations
- Driveway, parking space and double garage
- Five bedrooms all with built-in wardrobes
- Spacious lounge, plus playroom and conservatory
- Built in 2004 by Persimmon Homes
- Opposite a park, on an established development
- Bathroom, two shower rooms, downstairs cloakroom
- Kitchen with central island and adjacent utility
- Generous living spaces with fantastic flow
- Detached three-storey family home



Ground Floor
Floor area 74.8 sq.m. (805 sq.ft.)



First Floor
Floor area 55.7 sq.m. (599 sq.ft.)



Second Floor
Floor area 55.7 sq.m. (599 sq.ft.)



Garage
Floor area 19.1 sq.m. (205 sq.ft.)

TOTAL: 207 sq.m. (2,228 sq.ft.)

This floor plan is for illustrative purposes only. It is not drawn to scale. Any measurements, floor areas (including any total floor area), openings and orientations are approximate. No details are guaranteed, they cannot be relied upon for any purpose and do not form any part of any agreement. No liability is taken for any error, omission or misstatement. A party must rely upon its own inspection(s). Powered by www.Propertybox.io